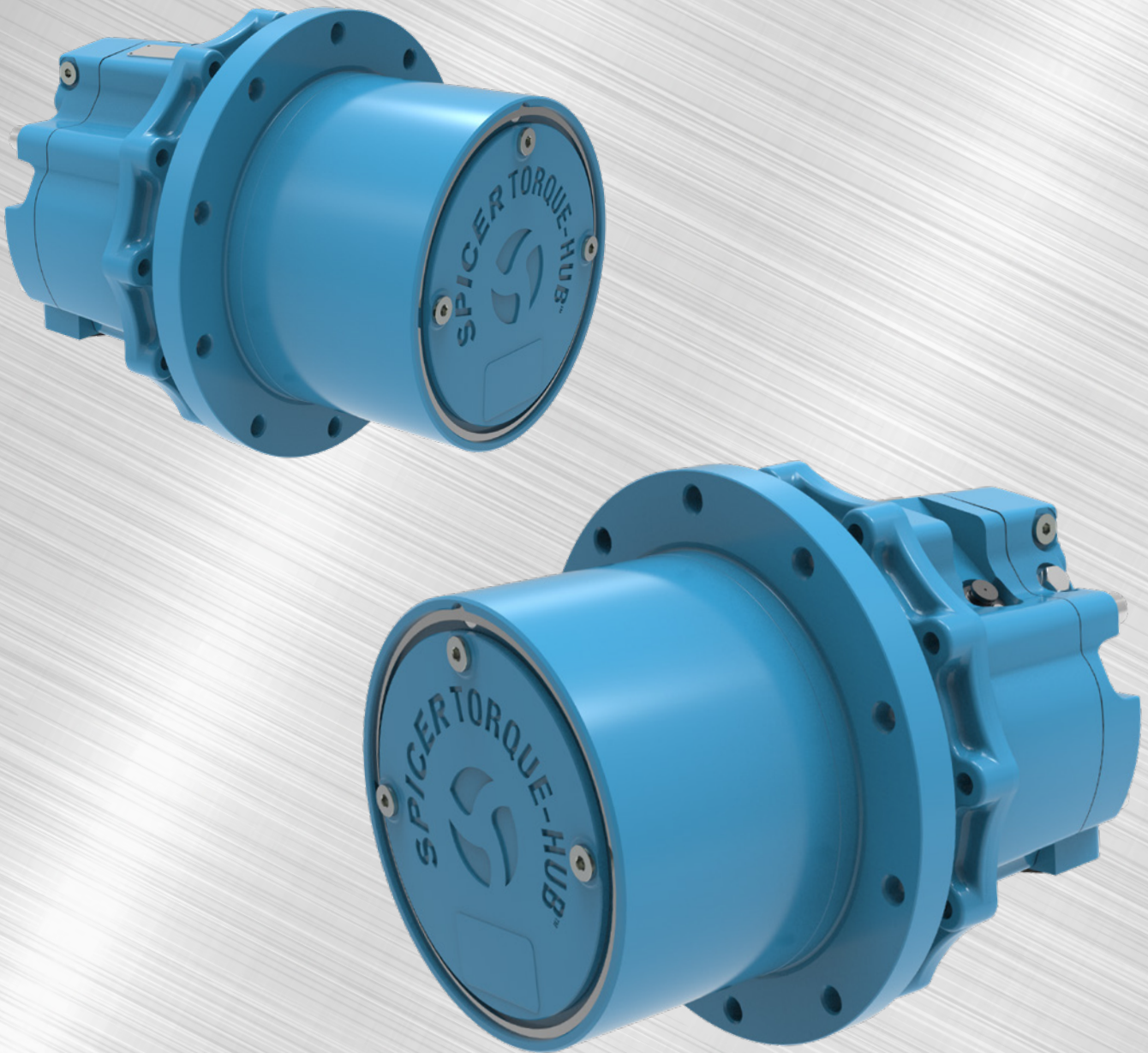




**SPICER**<sup>®</sup>  
Torque-Hub<sup>™</sup>

# Spicer<sup>®</sup> Torque-Hub<sup>™</sup>

## CTL Series Track Drive



Spicer<sup>®</sup> Torque-Hub<sup>™</sup> CTL Series  
specifically designed for today's  
**high-performance** hydraulically  
driven **Compact Track Loader**

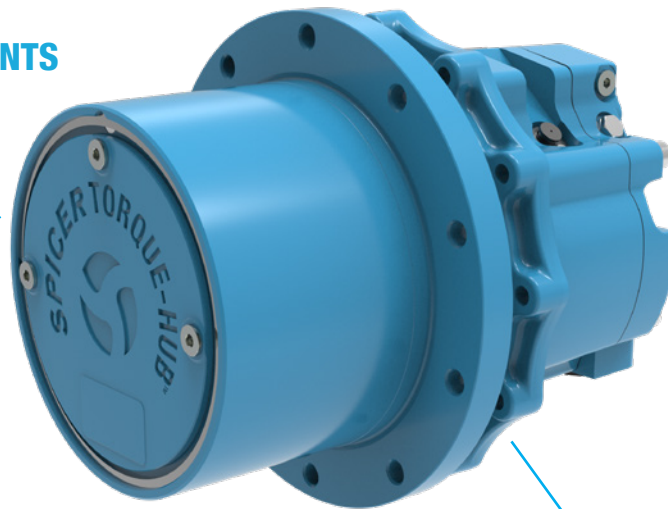
# CTL Series

## Spicer® Torque-Hub™ CTL Series Track Drive

The CTL Series from Dana comprises 4 sizes featuring integrated hydraulic motors uniquely suited for tracked equipment. A robust design, with thousands in daily operation and proven under the most demanding conditions, the CTL Series is popular with leading OEMs building Compact Track Loaders.

**ENGINEERED FOR LOW MAINTENANCE REQUIREMENTS AND EASY TO SERVICE**

**INCREASED PRODUCTIVITY WITH MAXIMIZED MOTOR DISPLACEMENTS  
MAX PRESSURE 400 BAR**



**ENHANCED OPERATOR COMFORT**

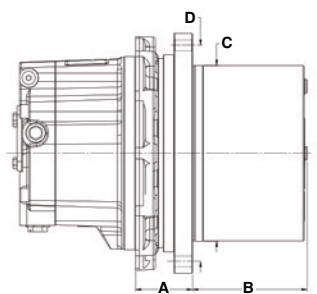
### Additional Features and Benefits

- 1 Product range specifically designed for modern high-efficiency Compact Track Loaders
- Torque ratings up to 17.000 Nm
- 2 speed design enhancing vehicle performances
- Mechanical face seal for reliable protection, hub and spindle designed for severe environmental conditions
- Enhanced start up torque in a compact package size and integrated design
- High radial load capacity bearings and robust internal brake design
- Suitable for hydraulic and electric vehicles, with Dana's hydraulic and electric motors

	CT05	CT07	CT11	CT17
<b>Parking Brake</b>	▲	▲	▲	▲
<b>Soft Shift</b>	▲	▲	▲	▲
<b>2 Speed integrated axial hydraulic motor</b>	▲	▲	▲	▲

▲ - Solution available

	CT05	CT07	CT11	CT17
<b>A - Flange to Flange mm [In]</b>	75 [2,95]	75 [2,95]	75 [2,95]	75 [2,95]
<b>B - Hub Length mm [In]</b>	148 [5,83]	148 [5,83]	179 [7,05]	204 [8,03]
<b>C - Sprocket Pilot Diameter mm [In]</b>	232 [9,13]	232 [9,13]	250 [9,84]	280 [11,02]
<b>D - Sprocket Bolt Circle Diameter mm [In]</b>	285 [11,22]	285 [11,22]	285 [11,22]	315 [12,04]



	CT05	CT07	CT11	CT17
<b>Output Torque Rating kNm [ft/lb]</b>	5 [3,688]	7 [5,163]	11 [8,113]	17 [12,538]
<b>Ratio Range</b>	21-24	21	21-28	36-51
<b>Motor Displacement</b>	44cc	53cc	53cc	53cc
<b>Machine Power</b>	Up to 74Hp	Up to 100Hp	More than 100Hp	More than 100Hp

### Dana.com/oh/contact

#### Application Policy

Capacity ratings, features, and specifications vary depending upon the model and type of service. Application approvals must be obtained from Dana; contact your representative for application approval. We reserve the right to change or modify our product specifications, configurations, or dimensions at any time without notice.



**SPICER®**

Torque-Hub™