

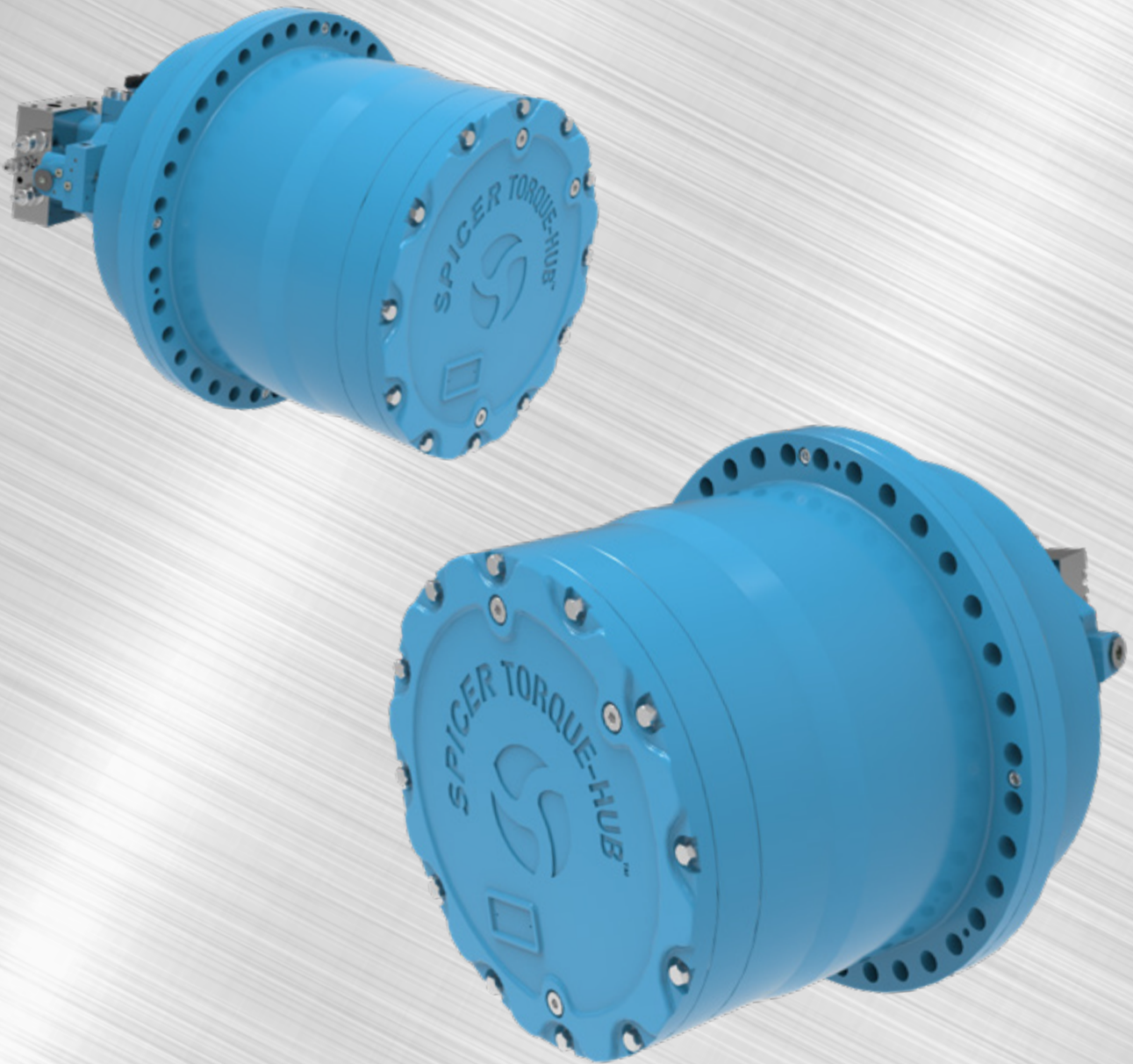


SPICER[®]

Torque-Hub[™]

Spicer[®] Torque-Hub[™]

RCT Series Track Drive



Spicer[®] Torque-Hub[™] Track Drive are
Engineered for a **variety of off-highway**
applications based on a **proven**
modular design approach.

RCT Series

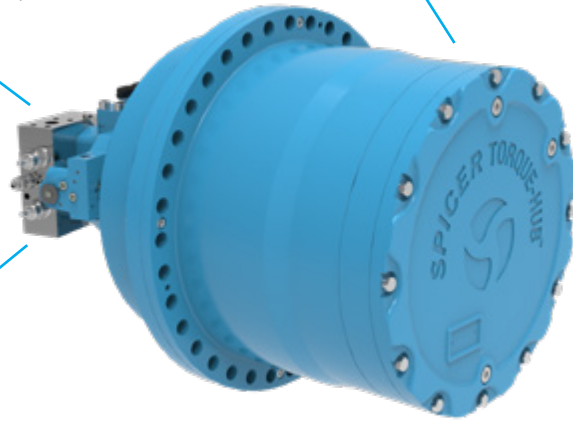
Spicer® Torque-Hub™ RCT Series Track Drive

The new RCT series is engineered to deliver performance, durability and reliability to Off-Highway tracked applications. The track drives offer a flexible packaging and gear ratios to meet manufacturer preferences. Our Spicer® Torque-Hub™ drives can be packaged with Brevini® hydraulic motors and pumps to offer an optimized solution that delivers superior power density, efficiency at start-up, and smooth starts and stops.

BEST IN CLASS EFFICIENCY PACKAGE WITH HYDRAULIC OR ELECTRIC MOTOR

ROBUST DESIGN SUITABLE FOR LOW TEMPERATURE

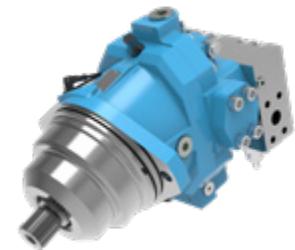
DELIVER HIGH TORQUE DENSITY FOR HIGH-PERFORMANCE MACHINES



Additional Features and Benefits

- 1 Product range specifically designed for Off-Highway tracked application
- 3 new Products suitable for large tracked vehicles
- Torque ratings from 80.000 Nm to 130.000 Nm
- Wide range of ratios and Internal multidisc parking brake
- High radial and axial load capacity bearings
- Special sealing system designed for severe environmental conditions
- Suitable for hydraulic and electric vehicles, with Dana's hydraulic and electric motors

Recommended motor: Brevini® SH7VR/MCV



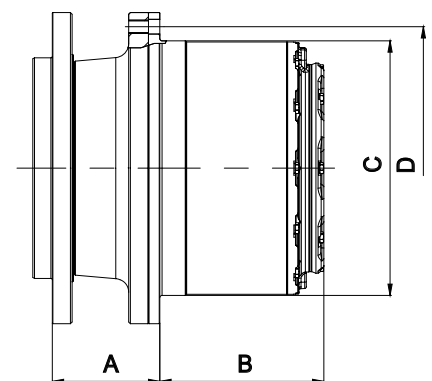
	9083	9103	9133
Integrated Parking Brake	▲	▲	▲
Hydraulic Motor Cartridge Version	Brevini Cartridge Motor + Motion Control Valve		
Disengage	▲	▲	▲

▲ - Solution available

		9083	9103	9133
A - Flange to Flange	mm [in]	90 [3,54]	165 [6,50]	190 [7,48]
B - Hub Length	mm [in]	290 [11,42]	263 [10,35]	290 [11,42]
C - Sprocket Pilot Diameter	mm [in]	400 [15,75]	408 [16,06]	450 [17,72]
D - Sprocket Bolt Circle Diameter	mm [in]	450 [17,72]	460 [18,11]	500 [19,69]

		9083	9103	9133
Output Torque Rating	kNm [ft-lbs]	80 [59,000]	100 [73,756]	130 [95,883]
Ratio Range		55-205	67-210 26*; 35*	67-210
Motor Mount		Cartridge	Cartridge	Cartridge

*Available on request - two-stage configuration



Dana.com/oh/contact

Application Policy

Capacity ratings, features, and specifications vary depending upon the model and type of service. Application approvals must be obtained from Dana; contact your representative for application approval. We reserve the right to change or modify our product specifications, configurations, or dimensions at any time without notice.



SPICER®

Torque-Hub™