

# eSAW Series Spicer Torque-Hub™

## Benefits

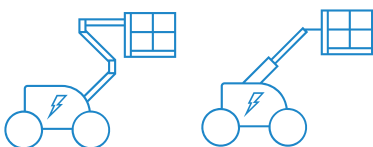
- Spicer Torque-Hub™ eSAW Series design with TM4 ElectroDynamics™ Integrated advanced motor technologies
- Greater efficiency and compact package size for electric Mobile Elevated Working Platform

## Features

- 1 product range to meet articulated and telescopic MEWP hybrid and fully electric drive performance requirements
- Torque ratings from 4.000 Nm to 13.000 Nm
- Designed specifically for electric MEWP duty cycle to perform reliably for the life of the machine
- TCO – minimum maintenance requirements and high efficiency reduces operation cost and energy consumption
- Reducing CO<sub>2</sub> emissions through electrification improves overall carbon footprint



## Ideal for Mobile Elevated Work Platforms



# eSAW Series Spicer Torque-Hub™

eSAW Series Spicer Torque-Hub™ features highly engineered Wheel Drive solutions to fulfill industry targets for performance, serviceability and reliability. TM4 ElectroDynamics™ advanced electric motor technologies offer power-dense motor design delivering high efficiency and best-in-class torque and power performance. Based on our customers' needs, we can offer an optimized drive solution improving performance and increasing productivity of electric boom lifts with hybrid and fully electric drive systems.

**INTERNAL INTEGRATED ELECTRIC PARKING BRAKE DESIGN FOR MAXIMUM HOLDING POWER**

**COMPACT THREE-STAGE PLANETARY GEAR DESIGN PROVIDES SUPERIOR GRADEABILITY**

**QUIET OPERATION**



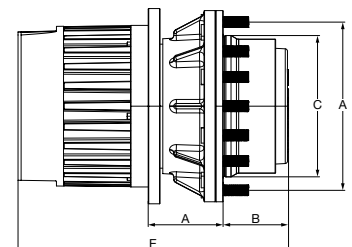
**FULLY INTEGRATED ELECTRO-MECHANICAL DRIVE SYSTEM WITH IP67 MOTOR PROTECTION FROM ENVIRONMENTAL HAZARDS**

**TM4 ELECTRODYNAMICS™ IPM ADVANCED MOTOR TECHNOLOGIES FOR GREATER EFFICIENCY IN A COMPACT PACKAGE SIZE**

Machine Classifications	Small	Medium	Large
Electric Articulated Boom	eSAW04	eSAW07	eSAW13
Electric Telescopic Boom			

	eSAW04	eSAW07	eSAW13
Output Torque Rating Nm [lbf ft]	4,000 [2,950]	7,000 [5,163]	13,000 [9,588]
Gear Ratio Range	82-119	82-119	134-311
Motor Max Speed rpm	6,000		
Motor peak power kW [Hp]	10 [13.40]	16 [21.40]	16 [21.40]
Motor cont. power S2, 60min. kW [Hp]	5 [6.70]	7 [9.40]	7 [9.40]
Motor peak Torque Nm [lbf ft]	46 [34.00]	70 [51.60]	70 [51.60]

	eSAW04	eSAW07	eSAW13
A - Flange to Flange mm [in]	106.5 [4.19]	106.5 [4.19]	115.9 [4.56]
B - Hub Length mm [in]	92 [3.62]	92 [3.62]	166.9 [6.57]
C - Wheel Pilot mm [in]	200 [7.88]	200 [7.88]	280 [11.00]
D - Wheel Bolt Circle Diameter mm [in]	241.3 [9.50]	241.3 [9.50]	335 [13.18]
E - Total unit length mm [in]	385 [15.17]	402 [15.82]	466.3 [18.36]



[Dana.com/e-Mobility](http://Dana.com/e-Mobility)

**Application Policy**

Capacity ratings, features, and specifications vary depending upon the model and type of service. Application approvals must be obtained from Dana; contact your representative for application approval. We reserve the right to change or modify our product specifications, configurations, or dimensions at any time without notice.

