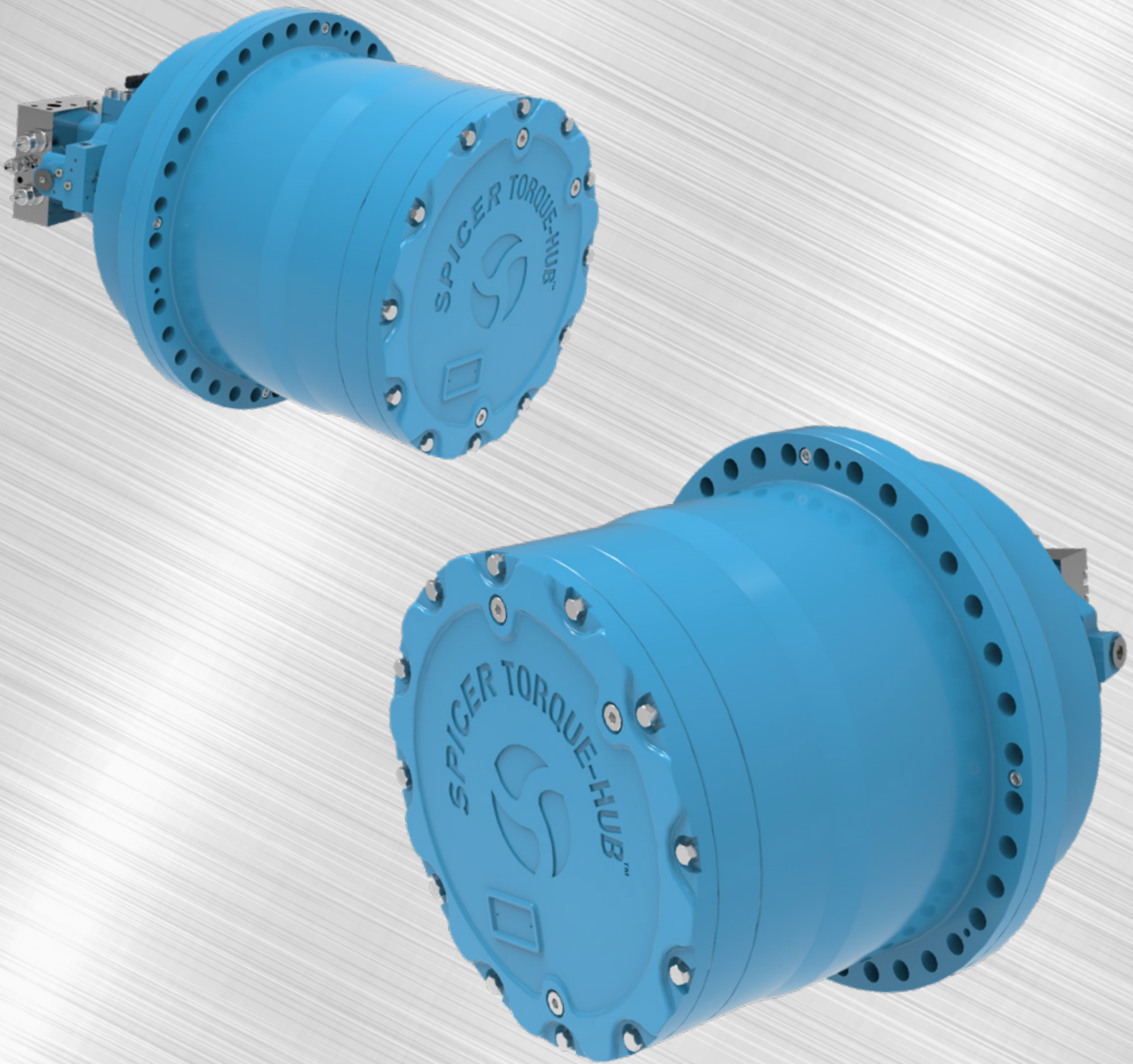




SPICER[®]

Torque-Hub[®]

Spicer[®] Torque-Hub[®] RCT Series Track Drive



Spicer[®] Torque-Hub[®] Track Drive are
Engineered for a **variety of off-highway
applications** based on a **proven
modular design approach**.

RCT Series

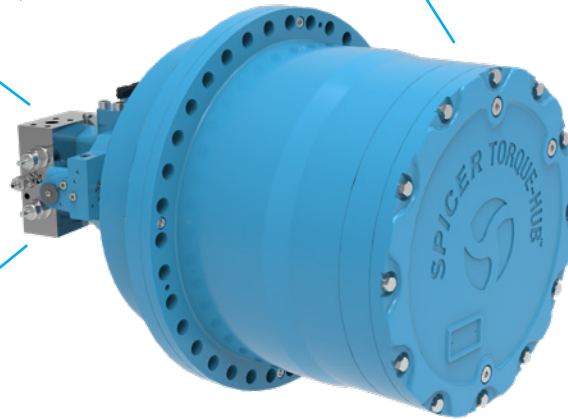
Spicer® Torque-Hub® RCT Series Track Drive

The new RCT series is engineered to deliver performance, durability and reliability to Off-Highway tracked applications. The track drives offer a flexible packaging and gear ratios to meet manufacturer preferences. Our Spicer® Torque-Hub® drives can be packaged with Brevini® hydraulic motors and pumps to offer an optimized solution that delivers superior power density, efficiency at start-up, and smooth starts and stops.

BEST IN CLASS EFFICIENCY PACKAGE WITH HYDRAULIC OR ELECTRIC MOTOR

ROBUST DESIGN SUITABLE FOR LOW TEMPERATURE

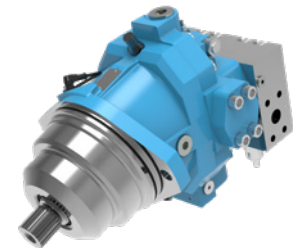
DELIVER HIGH TORQUE DENSITY FOR HIGH-PERFORMANCE MACHINES



Additional Features and Benefits

- 1 Product range specifically designed for Off-Highway tracked application
- 8 new Products suitable for all large tracked vehicles
- Torque ratings from 80.000 Nm to 450.000 Nm
- Wide range of ratios and Internal multidisc parking brake
- High radial and axial load capacity bearings
- Special sealing system designed for severe environmental conditions
- Suitable for hydraulic and electric vehicles, with Dana's hydraulic and electric motors

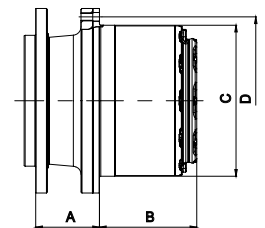
Recommended motor: Brevini® SH7VR/MCV



	9083	9103	9133	9183	9223	9263	9363	9454*
Integrated Parking Brake	▲	▲	▲	▲	▲	▲	▲	▲
Hydraulic Motor Cartridge Version	Brevini Cartridge Motor + Motion Control Valve							
Disengage	▲	▲	▲	▲	▲	▲	▲	▲

*Note: Crawler Version ▲ - Solution available

		9083	9103	9133	9183	9223	9263	9363	9454
A - Flange to Flange	mm [In]	90 [3,54]	165 [6,50]	190 [7,48]	168 [6,61]	166 [6,54]	170 [6,69]	130 [5,12]	255 [10,04]
B - Hub Length	mm [In]	290 [11,42]	263 [10,35]	290 [11,42]	341 [13,43]	361 [14,21]	366 [14,41]	430 [16,93]	473 [18,62]
C - Wheel Pilot Diamete	mm [In]	400 [15,75]	408 [16,06]	450 [17,72]	535 [21,06]	542 [21,34]	610 [24,02]	650 [25,59]	570 [22,44]
D - Wheel Bolt Circle Diameter	mm [In]	450 [17,72]	460 [18,11]	500 [19,69]	600 [23,62]	600 [23,62]	660 [25,98]	720 [28,35]	620 [24,41]



		9083	9103	9133	9183	9223	9263	9363	9454
Output Torque Rating	kNm [lb-ft]	80 [59,000]	100 [73,756]	130 [59,000]	180 [95,883]	220 [162,263]	260 [162,263]	360 [265,522]	450 [331,902]
Ratio Range		55-205	67-210	67-210	85-281	67-358	67-358	99-302	281-622
Motor Mount		Cartridge	Cartridge	Cartridge	Cartridge	Cartridge	Cartridge	Cartridge	Cartridge

Dana.com/oh/contact

Application Policy

Capacity ratings, features, and specifications vary depending upon the model and type of service. Application approvals must be obtained from Dana; contact your representative for application approval. We reserve the right to change or modify our product specifications, configurations, or dimensions at any time without notice.



SPICER®

Torque-Hub®