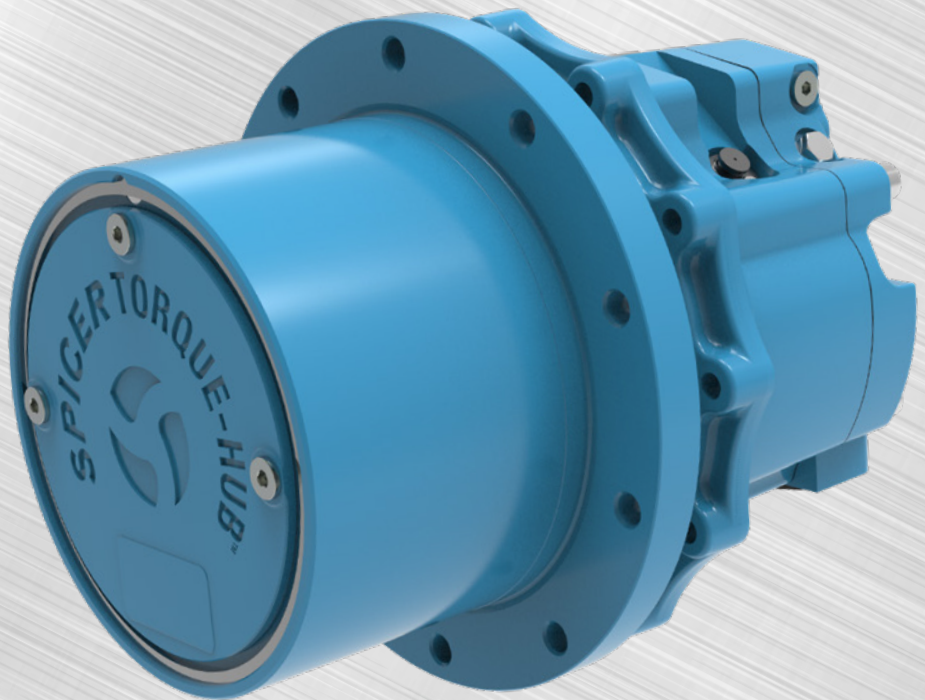
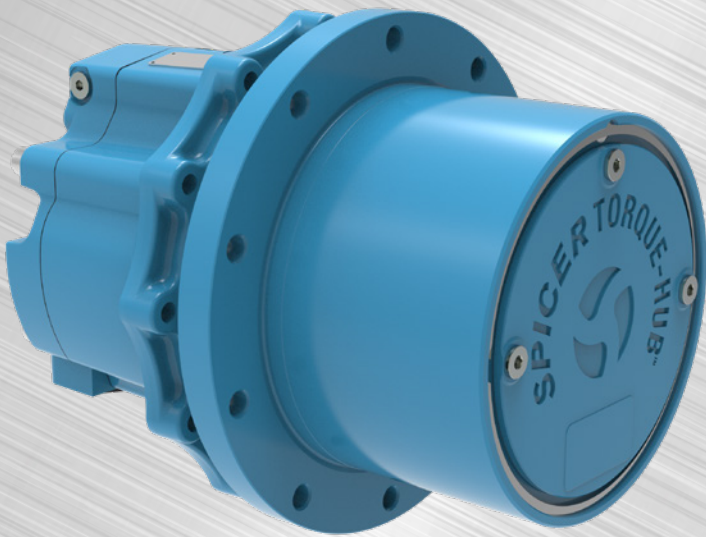




SPICER®

Torque-Hub®

Spicer® Torque-Hub® CT Series Track Drive



Spicer® Torque-Hub® CT Series
specifically designed for today's
high-performance hydraulically
driven **Compact Track Loader**

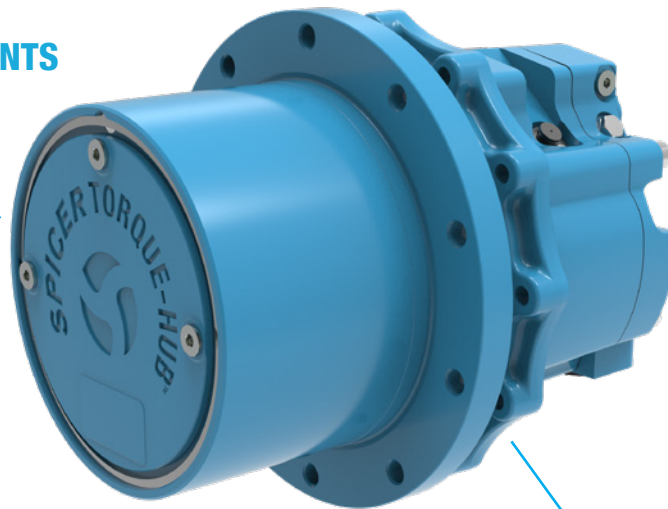
CT Series

Spicer® Torque-Hub® CT Series Track Drive

The CT series from Dana comprises 5 sizes featuring integrated hydraulic motors uniquely suited for tracked equipment. A robust design, with thousands in daily operation and proven under the most demanding conditions, the CT Series is popular with leading OEMs building Compact Track Loaders.

ENGINEERED FOR LOW MAINTENANCE REQUIREMENTS AND EASY TO SERVICE

**INCREASED PRODUCTIVITY WITH MAXIMIZED MOTOR DISPLACEMENTS
MAX PRESSURE 400 BAR**



ENHANCED OPERATOR COMFORT

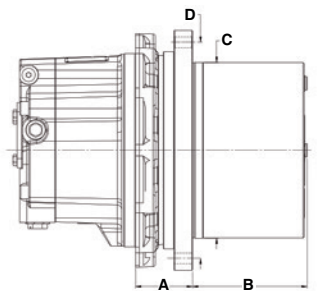
Additional Features and Benefits

- 1 Product range specifically designed for modern high-efficiency Compact Track Loaders
- Torque ratings up to 17.000 Nm
- 2 speed design enhancing vehicle performances
- Mechanical face seal for reliable protection, hub and spindle designed for severe environmental conditions
- Enhanced start up torque in a compact package size and integrated design
- High radial load capacity bearings and robust internal brake design
- Suitable for hydraulic and electric vehicles, with Dana's hydraulic and electric motors

	CT05	CT07	CT11	CT17
Parking Brake	▲	▲	▲	▲
Soft Shift	▲	▲	▲	▲
2 Speed integrated axial hydraulic motor	▲	▲	▲	▲

▲ - Solution available

	CT05	CT07	CT11	CT17
A - Flange to Flange mm [In]	75 [2,95]	75 [2,95]	75 [2,95]	75 [2,95]
B - Hub Length mm [In]	148 [5,83]	148 [5,83]	179 [7,05]	204 [8,03]
C - Sprocket Pilot Diameter mm [In]	232 [9,13]	232 [9,13]	250 [9,84]	280 [11,02]
D - Sprocket Bolt Circle Diameter mm [In]	285 [11,22]	285 [11,22]	285 [11,22]	315 [12,04]



	CT05	CT07	CT11	CT17
Output Torque Rating kNm [ft/lb]	5 [3,688]	7 [5,163]	11 [8,113]	17 [12,538]
Ratio Range	21-24	21	21-28	36-51
Motor Displacement	44cc	53cc	53cc	53cc
Machine Power	Up to 74Hp	Up to 100Hp	More than 100Hp	More than 100Hp

Dana.com/oh/contact

Application Policy

Capacity ratings, features, and specifications vary depending upon the model and type of service. Application approvals must be obtained from Dana; contact your representative for application approval. We reserve the right to change or modify our product specifications, configurations, or dimensions at any time without notice.



SPICER®

Torque-Hub®