

Spicer[®] Electrified[™] e-Hub Drive

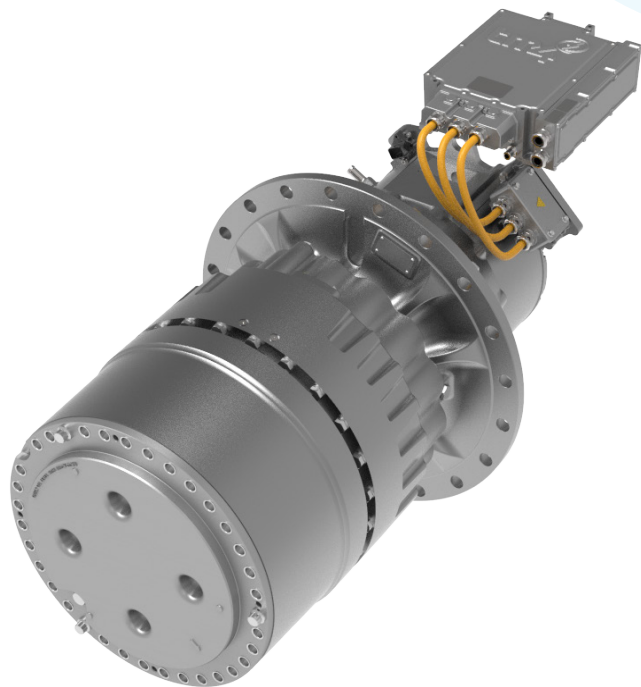
eSH801

Product Benefits

- A fully integrated electro-mechanical system
- Integrates proven heavy-duty Spicer[®] axle architecture
- Utilizes Brevini[®] planetary drive designs
- Employs TM4[®] electric motor technology
- Uses Dana's advanced control expertise

Product Features

- Maximum output speed: 64-117 RPM
- Peak output torque: 19-36 kNm
- Peak output power: 193 kW
- Continuous output power: 139 kW
- DC voltage range (V): 350 to 750 V
- Maximum current (A): 350 A



Ideal for Heavy-Duty Mining and Construction Vehicles

