

Brevini® Electrified™ e-Pump Gr.2/Gr.3

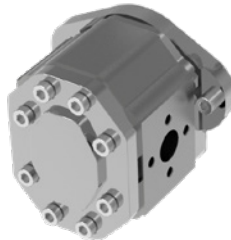
Benefits

- Brevini® Gear Pump series are designed for Mobile, Construction and Material Handling applications for both electric and hydraulic machines
- Effective performances and operations with compact design
- Multiple pumps available
- Brushless, magnet-free design

Features

- Very high mechanical and volumetric efficiencies
- Low noise level
- Long life and reliability
- Brushless, magnet-free design motor
- Higher performance than AC Induction Motor
- Very high power-density with Multilayer Power modules
- Isolated CAN Open and serial interfaces

OT200	Displacements	3,73 - 7,5 cc/rev
	Peak Pressure	300 bar
	Max Speed	4.000 rev/min
OT300	Displacements	22 - 90 cc/rev
	Peak Pressure	300 bar
	Max Speed	3.500 rev/min
Electric Motor MT1901	Max. Power	40 kW
	Max. Torque	210 Nm
	Efficiency	>95%
	Voltage	48 V - 120 V
Controller AC-X1	Efficiency	>95%
	Ambient temperature range	-40°C...55°C
	IP protection	IP65



Dana.com/Electrified

Application Policy

Capacity ratings, features, and specifications vary depending upon the model and type of service. Application approvals must be obtained from Dana; contact your representative for application approval. We reserve the right to change or modify our product specifications, configurations, or dimensions at any time without notice.