



**SPICER**  
ELECTRIFIED

e-Drive Systems

# Spicer® Electrified™ e-Hub Drive

7HE

## Product Benefits

- A fully integrated electro-mechanical system
- Compact length allows greater design flexibility
- Ashwoods IPM motor technology for greater efficiency with less size and weight

## Product Features

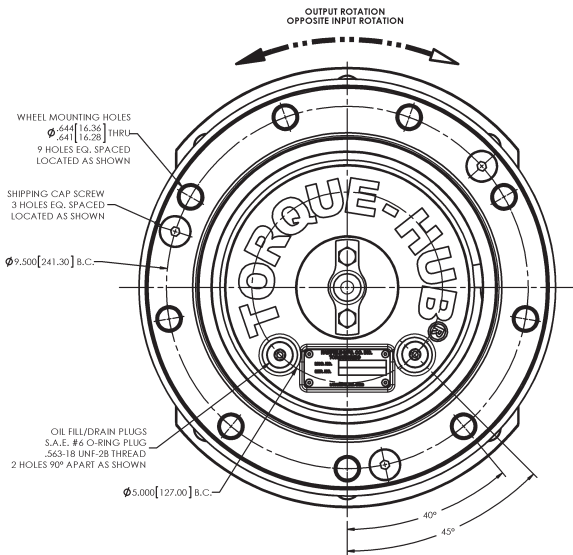
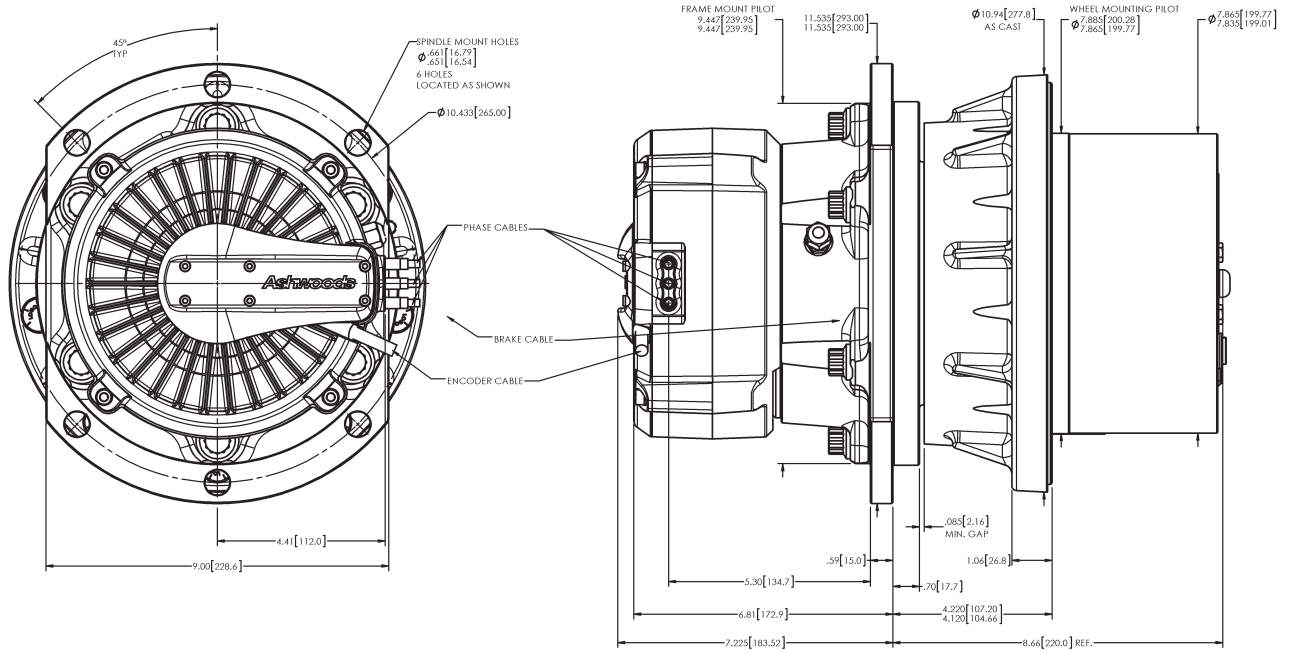
- Utilizes proven Spicer® Torque-Hub® drive designs
- Integrated parking brake
- IP67 motor ingress protection



Ideal for Aerial Work Platforms, Light Construction Vehicles, and Material Handling Equipment



# Spicer® Electrified™ e-Hub Drive | 7HE



Catalog prints are representative of the units.  
 Before final design, request a certified print from Dana.

**Performance Data**

Continuous	Intermittent
30,000 lb-in	60,000 lb-in
2,500 lb-ft	5,000 lb-ft
3,390 Nm	6,780 Nm
346 kg-m	692 kg-m

**Speed Limitations**

**Input Speed:** 8,500 RPM Max Intermittent

**Weight**

**Approximately** 144lbs (65 kg)

Note: Specific models will change weights.

**Model Formula**

**Oil**

Fill to half full with 90 weight gear lube with EP additive on most applications.

**Volume of Oil:**  
23 oz. (680 cm<sup>3</sup>)

Note: Oil level and type will vary with specific model and application.

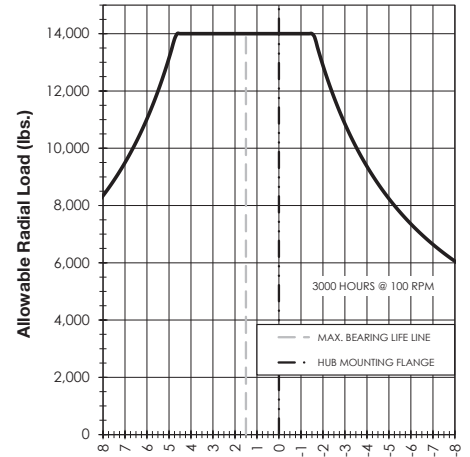
**Conditions of Bearing Curve**

**Life** = 3,000 hours B-10  
**Speed** = 100 RPM output

To adjust for loads and speeds other than shown on curve:

$$\text{Adjusted Life (hrs)} = 3000 \left( \frac{100 \text{ RPM}}{\text{Speed (Adjusted)}} \right) \left( \frac{\text{Load (Curve)}}{\text{Load (Adjusted)}} \right)^{10/3}$$

**Bearing Curve**



**Distance from Hub Mounting Face (in.)**

$K_A = 1.19$        $K_B = 1.19$   
 $BRR_A = 12,002 \text{ lbs}$        $BRR_B = 12,002 \text{ lbs.}$   
 Spread = 3.520      OFFSET = -0.210

**7 H E T 08 0 AE3 Z 048**

**7 – 7,000 Series Spicer® Torque-Hub®**

**Output**  
H – Hub

**Motor Input**  
E – Ashwoods Motor Adapter with seal

**Spindle Brake**  
T – Warner PK 35  
Electric Brake (48V)  
- 75 Nm

**Options**  
Z – Seal boot

**Motor Model Code**  
AE3 - Motor 200-33  
(48V AC, Peak Motor Torque 42 Nm @ 350 Arms)

**Reduction**  
036 – 35.92:1  
048 – 47.60:1  
057 – 57.49:1  
072 – 71.94:1  
096 – 96.15:1  
118 – 118.21:1

**Stud Configuration**  
0 – None  
F – 5/8"-18 by 2.437 in.

Spindle		Hub		
Flange Mounting Dia.	B.C.	Mounting Dia.	B.C.	
08	7.000 6.995	(6) 5/8 - 11 UNC 2B on 8.250 B.C.	7.885 7.865	(9) .644/.641 on 9.500 B.C.

Thermal Rating		
Motor #	60 minutes	2 minutes
200-33	3.54 at 4847 RPM & 54 Arms	5.20 at 1107 RPM & 255 Arms

# Spicer® Electrified™ e-Hub Drive | 7HE

**7HE integrated electric drives utilize smaller, lighter, and more efficient permanent magnet electric motors to deliver the torque, output, and long-life performance required for industrial machinery and off-highway mobile equipment.**

**The 7HE is available in double and triple planetary options with a spring-applied, electronically released brake.**

## Typical applications include, but are not limited to:

- Aerial work platforms
- Rough terrain forklifts
- Commercial turf equipment
- Ground support equipment
- Light- / medium-duty construction
- Industrial equipment
- Automated guided vehicles
- Tugs and push backs

## Key Features:

- Compact length
- Integrated parking brake
- IP67 motor ingress protection
- Enhanced gear design for quieter operation
- Greater efficiency with improved battery life



**NFPA**  
Solutions through motion technology  
MEMBER

Spicer® Torque-Hub® is a registered trademark of Dana Limited.

**Dana.com/GrazianoFairfield**

**Dana Incorporated**  
Off-Highway Drive and Motion Technologies  
2400 Sagamore Parkway South  
P.O. Box 7940  
Lafayette, Indiana 47903 USA  
Office: +1 765.772.4000



**SPICER®**  
ELECTRIFIED

*e-Drive Systems*